



# MONTHLY MEMBERSHIP PROGRESS REPORT

District 5M 5

Results as of: 01/31/2018

GMT: MICHAEL MOLENDIA

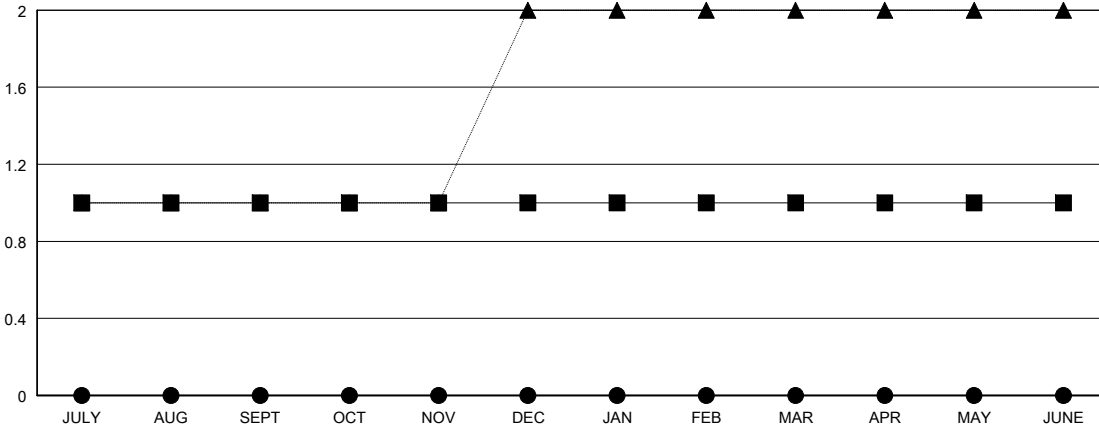
LOCATION MINNESOTA

GMT CA

Clubs			
RESULTS FOR 2017-2018			
QUARTER	NEW CLUB GOAL	NEW CLUBS	DROPPED CLUBS
JULY/AUG/SEPT	1	0	1
OCT/NOV/DEC	0	0	1
JAN/FEB/MAR	0	0	0
APR/MAY/JUNE	0	0	0

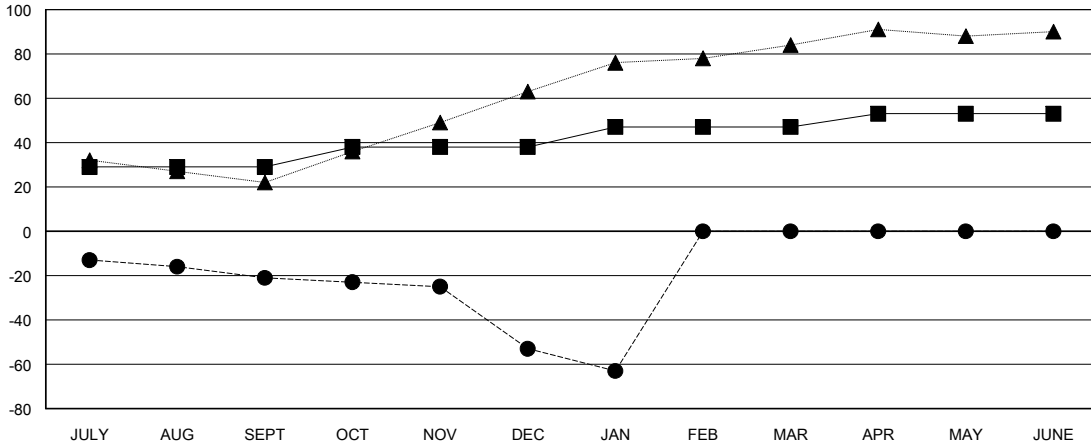
Members			
RESULTS FOR 2017-2018			
QUARTER	MEMBER GROWTH NET GOAL	MEMBER GROWTH ACTUAL	DROPPED MEMBERS ACTUAL (including transfers)
JULY/AUG/SEPT	29	15	34
OCT/NOV/DEC	9	36	64
JAN/FEB/MAR	9	32	17
APR/MAY/JUNE	6	0	0

GOALS AND ACTUAL NEW CLUBS CUMULATIVE



- - CURRENT YEAR GOALS FOR NEW CLUBS
- - CURRENT YEAR ACTUAL NEW CLUBS
- ▲ - LAST YEAR ACTUAL NEW CLUBS

GOALS AND ACTUAL MEMBERS CUMULATIVE



- - MEMBER GROWTH NET GOAL
- - MEMBER GROWTH ACTUAL
- ▲ - LAST YEAR MEMBERSHIP ACTUAL

DROPPED CLUBS: 2
------------------

23 CLUBS OF 42 ADDED 1 OR MORE NEW MEMBERS

GENDER DISTRIBUTION	
MALE	1,055 (72.76%)
FEMALE	395 (27.24%)
Women Percentage Fiscal Year Goal: 30%	

DROPPED MEMBERS	
DECEASED	8
CLUB CANCELLED	29
OTHER	78
<b>TOTAL</b>	<b>115</b>

[CLICK HERE FOR CUMULATIVE MEMBERSHIP DATA](#)

TOTAL FAMILY UNIT MEMBERS	228
FAMILY MEMBERS PAYING HALF DUES	117